



Itec Tiyende Product Catalogue

SECURITY SOLUTIONS



WHAT WE CAN ACHIEVE TOGETHER

A single point of contact for cost-effective, managed technology services.

Itec Tiyende is a dedicated leader in business solutions, helping to solve prevailing operational and technology challenges around systems integration and the digital transformation of your business. From Print, Unified Communications, Intelligent & Cybersecurity to Document Management and Software Solutions, Itec can assist you in future-proofing your business by helping prioritise the technology solutions most suited to your requirements and budget, while managing the operational implementation of these solutions as a monthly service with flexible finance options.

Itec Managed Business Services



Communications

The message is more important than the medium, especially when we have assessed your business to give you access to all the tools of communication you need. PABX, mobile, video conferencing, data calling and connectivity, whatever works for your business to get the message across.



Cloud

We can help you to run your business applications and hardware in the cloud. Since everything in the cloud is more connected, you can securely cross-reference and share information across different applications from any device, anywhere.



Intelligent Security

We can integrate security solutions into every part of your business so that you are more prepared for disaster recovery, business continuity, more aware of your employee activities and have a solid operational awareness of your technology.



Print Solutions

We can seamlessly integrate cloud-based digital services with your in-house ERP systems, saving a lot of time and money. This way you get all the benefits of systems that can talk to each other, without changing what you already have.



Cybersecurity

Our comprehensive range of cybersecurity solutions caters to both individual users and large enterprises alike. Tailored to meet your specific requirements, we offer highly effective managed detection and response services. Leveraging cutting-edge security technologies, our solutions provide real-time threat prevention across diverse environments including networks, clouds, and data centers.



Software

Our network-ready, cloud-based software is secure and easy to integrate with customisable solutions for intelligent information and workflow management, digital filing, archiving and disaster recovery, and auditable cost management.



Finance

Our in-house finance solutions offer customers flexible, affordable and accessible finance, managed by professional consultants who help to structure any deal simply, efficiently and cost effectively.



Our single source capability, together with our innovative, flexible approach and desire to please, are the reasons that our clients entrust their business technology solutions to us.



PRODUCT CATALOGUE INDEX



1. Communications _____ pg 4

CONNECTIVITY

- iLink Connectivity
- APN Connectivity

VOICE

- VoiceGate & VoiceGate Flex
- VoiceGate Contact Centre
- Mitel SME to Enterprise
- Mitel Handsets & Base-Station
- Mitel Unified Communications
- Supporting Peripheral Solutions



2. Intelligent Security _____ pg 13

- CCTV Surveillance
- Alarm Systems & Control Rooms
- Security Software Solutions
 - Lytehouse
 - timeTec
- Access Control and Time & Attendance
- Visitor Parking & Traffic Management
- Pedestrian Access Control



3. Cybersecurity _____ pg 20

- Fortinet
- Sophos



4. Cloud _____ pg 23

- Private, Public & Hybrid Business Cloud Solutions



5. Print Solutions _____ pg 25

- Printer Solutions



6. Software _____ pg 27

- Software
- Print Director



7. Finance _____ pg 29

- In-House Financing Solutions



INTELLIGENT SECURITY

Transform your operations with intelligent security.

Our advanced security solutions go beyond protection. With AI-driven technology and analytics, we elevate your security infrastructure into a powerful business management tool. From CCTV Surveillance, Access Control to Intelligent Data Analysis, we help you make informed decisions, boost productivity, and streamline processes. With our intelligent security solutions, you not only safeguard your company, employees, and customers, but also unlock the full potential of your operations.



HOW IT WORKS

During our onsite visits to assess your physical infrastructure and requirements, we prioritise your needs. We don't just focus on enhancing safety; we bring innovation and efficiency to the table, aiming to provide solutions that not only bolster security but also boost productivity, all while ensuring adherence to industry standards.

ELEVATE YOUR SECURITY & BUSINESS PERFORMANCE

Ensuring the safety and security of everyone and everything is paramount for every company. At Itec, we recognise the daily challenges you face in maintaining on-site security and specialise in providing tailored solutions across diverse industries.

Beyond traditional safety measures, our solutions offer

powerful business management tools driven by AI and analytics. By tracking behaviours, analysing patterns, proactively predicting incidents, and more, we empower you to make informed decisions that go beyond protecting staff, goods, and customers. From optimising operations to shaping product strategies, our advanced capabilities elevate your business performance to new heights.



CCTV Surveillance



Access Control and Time & Attendance



Security Software Solutions



Visitor, Traffic & Parking Management



Pedestrian Access Control



Alarm Systems & Control Rooms



IP Network Cameras

Network Video Recorders (NVRs)

HD/Analogue Cameras

Digital Video Recorders (DVRs)



- High-Quality Video and Audio: Offers superior resolution and sound for clearer footage.
- Remote Accessibility: Allows live video access from anywhere via internet-enabled devices.
- Scalability and Flexibility: Easily expandable and integrates with other network systems.
- Advanced Features and Analytics: Includes motion detection, facial recognition, and video analytics.
- Cost-Effective and Efficient: Uses existing network infrastructure and supports PoE, reducing installation costs.

Product Range:

- Pro & Lite Series
- Panoramic & Special Series

- High-Definition Recording: Provides clear, detailed footage for better identification.
- Remote Access: View live or recorded footage from any internet-connected device.
- Advanced Management: Supports motion detection, event recording, and analytics.
- Efficient Storage: Offers data compression, and easy footage retrieval.
- Backup and Storage Options: Various solutions for preserving important footage.

Product Range:

- Ultra, Pro & Lite Series

- Cost-Effective: Budget-friendly surveillance option.
- Simple installation and reliable performance
- Real-Time Video: Zero-latency live footage.

Product Range:

- Pro & Lite Series
- Panorama & Special
- HDCVI Accessories

- High-Quality Recording: Captures clear, detailed footage.
- Scheduled/Motion Recording: Efficient storage use by recording only as needed.
- Remote Access: View footage from any internet-connected device.
- User-Friendly Interface: Easy operation and management.
- Backup and Storage Options: Various solutions for preserving important footage.

Product Range:

- Ultra, Pro & Lite Series

Wireless Wi-Fi & 4G Cameras

Advanced Technology & Applications



- Remote Access: View footage from any internet-connected device.
- Flexible Power Options: Use batteries or solar panels for remote areas.
- 4G Support: Operates in locations without Wi-Fi.
- Easy Setup and Scalability: Quick to install and expand.
- Cost-effective: Lower install costs and no requirement for head-end equipment

Product Range:

- Wireless Battery-Operated Cameras
- Indoor Wi-Fi Cameras
- Outdoor Wi-Fi Cameras

- Do not require a light source.
- Provide enhanced coverage in diverse environments with harsh conditions or extreme darkness.
- Long-range detection and temperature measurement for all-weather monitoring and comprehensive surveillance.

Product Range:

- Anti-Corrosion Series
- Lite, Pro & Ultra Series
- Thermography & Outdoor Series

- Powered by AI chip and deep learning algorithm.
- Provides human-oriented solutions including face recognition, privacy protection, human video metadata, people counting, stereo analysis and more.
- More precise and effective AI search to locate targets and human-based data for business analysis.
- Project-oriented products including thermal imaging devices, and software platform, delivering precise, reliable and comprehensive AI solutions.

ALARM SYSTEMS & CONTROL ROOMS



INTELLIGENT SECURITY

Alarm Systems



- Smoke, water leak and displacement detection (for important objects).
- Wired or wireless alarm system based on available infrastructures and budgets.
- Magnetic contact for doors and windows, dual-tech detector for pets.

Product Range:

- Wireless Intrusion Alarm
- Emergency Alarm

Control Room Displays



- Tiny bezel screen splicing, uniform colour and brightness, and an industrial grade hardware design.
- Signal transmission without delay and loss, flexible control modes, and multiple signal and resolution.

Product Range:

- Digital Signage
- LED Displays
- Interactive Flat Panels
- LCD Video Walls
- Monitors

Controllers



- Easy-to-operate yet powerful video walls render clear, vivid images and videos so they can appear seamlessly on screens.
- Keyboards and controllers enable you to find the right details at the right time.
- Video feed that security professionals need for a safe, well-monitored environment.

Product Range:

- Video Wall Controllers
- Keyboards
- Decoders





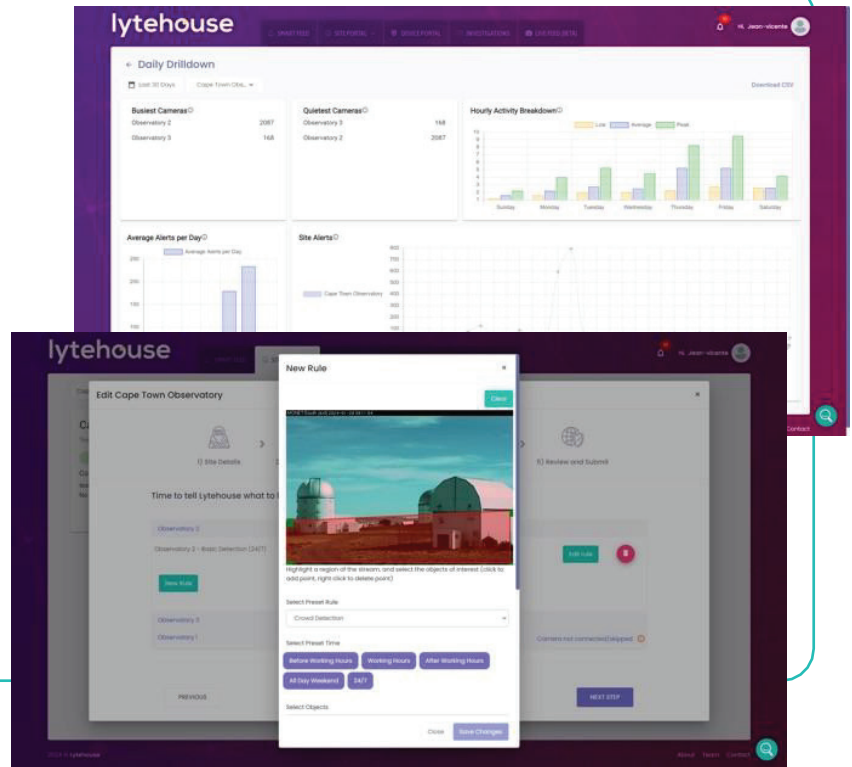
lytehouse

Video intelligence software turning CCTV streams into data-driven insights for any security need.

Lytehouse - Smarter Security From Detection To Dispatch

- Ensure that you can harness the full power of advanced analytics without being hindered by bandwidth limitations, camera brands or legacy infrastructure.
- Seamlessly integrate Lytehouse onto any site for proactive security, health and safety and operational risk mitigation.
- Create instant reports across any site, camera or control room with easy-to-digest graphics.
- In a control room environment, improve the camera-to-operator ratio by pulling the Operator Efficiency Report which enables users to track performance and make better hiring decisions to scale their business.
- 20% of cameras make up 80% of the alarms. Use our Configuration Audit to locate problem cameras generating too many or too few alerts.
- Run the Daily Drill Down reports and Alert Summaries for a bird's eye view of your detections, people/vehicle counting, and busiest hours to offer security and business value to your customers.

Various deployment methods make Lytehouse effective in any environment.

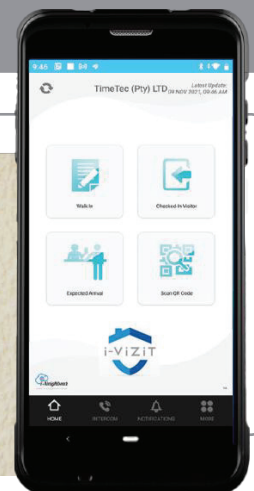


timeTec

Platform for real-time visitation records to generate extensive reports captured by the representative who checked visitors in or out.

timeTec - Cloud hosted visitor management system

- Instant in-app notification of arrival and departure.
- Instant notification and authorisation of unannounced visitors via the platform and scanner. Pre-register or invite visitor to receive a QR or pin code.
- Restrict unwanted visitors.
- Capture and verify visitor information.
- Trigger barrier gate after successful verification.





Facial Recognition



- **Enhanced Security:** Accurately identifies individuals with 99% accuracy using facial recognition and other biometric options.
- **Convenience:** Hands-free access without keycards or PINs.
- **Recognition Speed:** Lightning-fast authentication with a recognition speed of 0.2 seconds.
- **Audit Trails:** Records entry/exit times for comprehensive security logs.
- **Scalability:** Easily scales for large user bases without physical credentials

Product Range:

- Value, Pro & Ultra Series
- Face Recognition for Turnstiles

Fingerprint Readers



- **Biometric Security:** Highly secure access based on unique fingerprints.
- **Accuracy:** High accuracy in identification for minimised unauthorised access.
- **Fast Authentication:** Quick access with fast fingerprint recognition.
- **Audit Trails:** Records entry/exit times for accountability.

Product Range:

- Card, Fingerprint & Reader Terminals

Smart Lock (Biometrics)



- **Electronic mechanical lock** that allows you to open and lock your doors with a virtual key of fingerprint, face, password, RFID.
- **Cutting-edge biometric technology** provides security and convenience.

Product Range:

- Home Locks
- Hotel Locks

TIME & ATTENDANCE

JT Manager



- Automated and reliable time and attendance with access control, job costing, leave management and mobile applications.
- JT Manager is a versatile tool intended to make installation of Jarrison Time simple and convenient.
- Includes options for .net framework and Microsoft Redistributable packages.

JT Clock Myself



- Use your own smartphone to clock yourself wherever you are.
- Ideal for sales representatives, drivers or people working from home.
- Smart, Mobile, Geofencing and real-time clockings.
- Job costing option available, which caters for starting and stopping jobs on your own device.

JT Clock Team



- Clock the entire team using a single device.
- External biometric options available.
- Ideal for construction sites or any other work requiring a mobile team.
- Geofencing with area schedule and real-time clocking for those working out of the office.
- The JT Clock solution can run completely offline.

JT Monitor



- The JT monitor can be configured to monitor your Jarrison Time engine, automatically start it if it is not running, and notify you via email.
- Optional utility available.
- Different alerts can be configured depending on your requirements.

JT Lite



- Practical and feature-rich access control software.
- Easily navigable system.
- Up-to-date on-screen 'In/Out' Register to help keep track of who is on-site.
- Employees can easily be added in bulk and managed as individuals, or as groups by using filters.



Intelligent Traffic & Parking Management Solutions

ANPR Camera



- ANPR solutions automatically capture license plates in real-time.
- Rely on big image data and well trained deep-learning models.
- Multilingual Recognition (English, Arabic, Chinese, Cyrillic, Thai etc.)
- High Recognition Rate of 95-98% with alphanumeric number plates.
- Fast Recognition of around 100 milliseconds.
- Cost-effective.

Bollards



- Quality Bollards control vehicle access while ensuring there still is regular pedestrian flow.
- Static or removable options.

Product Range:

- Bollards
- Anti-Ram Posts
- Static & Removable

Barriers

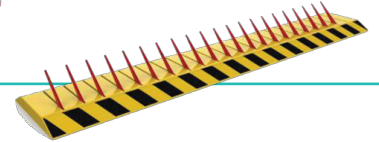


- Automated & manual barriers with boom arms.
- Manual options are ideal for Ideal for road closures and upervised access control.
- Automated options are designed to handle a high volume of traffic and have a motor with battery back-up.

Product Range:

- Automated Barriers with advertising and battery backup options.
- Manual Boom & Swing Barriers
- Concertina Barrier

Spike Barriers



Product Range:

- High Security Spike Barrier - Flush Mount
- High Security Spike Barrier - Surface Mount
- Single Direction Traffic Flow Spike Barrier - Flush Mount
- Single Direction Traffic Flow Spike Barrier - Surface Mount

Pedestrian Access Control

Turnstiles



Product Range:

- Turnstile Container Conversion
- Glass Full & Half Height Turnstiles
- Industrial Mantrap Turnstile
- Industrial Full & Half Height Turnstiles
- Portable 3 Arm Waist Height Turnstiles
- Waist Height Turnstile Slimline

Speedstiles



Product Range:

- Flap Barrier
- Retractable Barrier
- Swing Barrier

Security Booths



- Locally Manufactured to International Standards.
- Only Top-Quality Graded Material & Suppliers are used.
- Extruded Anodised Aluminium.
- Dorma Pin & Bearing Adjustable Hinges for Long-Lasting Durability.

Product Range:

- Security Booths
- Mantraps

Pedestrian Access



Product Range:

- Motorised Swing Gates Round
- Motorised Swing Gates Square
- Special Need Gates

TOP-TIER PARTNERS

Transform your operations with intelligent security.

Under the umbrella of Intelligent Security, we pride ourselves on partnering with top-tier brands to deliver unparalleled security solutions. Our longstanding relationships with these vendors ensure that we provide you with the best-in-class products and services. With multiple accolades and awards under our belt, you can trust in our commitment to excellence.



Together with our trusted and reputable partners and vendors, we are dedicated to optimising your business processes and enhancing productivity for better strategic decision making and in the end contributing directly to your bottom line.

Explore our range of brand logos below to see the quality and reliability that we bring to every implementation.

