



ITEC TIYENDE MANAGED BUSINESS SERVICES

COMPANY PROFILE



WHAT WE CAN ACHIEVE TOGETHER

A single point of contact for cost-effective, managed technology services.

Itec Tiyende is a dedicated leader in business solutions with 20 years of expertise, helping to solve prevailing operational and technology challenges around systems integration and the digital transformation of your business. From Print, Unified Communications, Intelligent Security & Cybersecurity to Document Management and Software Solutions, Itec can assist you in future-proofing your business by helping prioritise the technology solutions most suited to your requirements and budget, while managing the operational implementation of these solutions as a monthly service with flexible finance options.

Itec Managed Business Services



Communications

The message is more important than the medium, especially when we have assessed your business to give you access to all the tools of communication you need. PABX, mobile, video conferencing, data calling and connectivity, whatever best supports your business communication needs.



Cloud

We can help you to run your business applications and hardware in the cloud. Since everything in the cloud is more connected, you can securely cross-reference and share information across different applications from any device, anywhere.



Intelligent Security

We can integrate security solutions into every part of your business so that you are more prepared for disaster recovery, business continuity, to be more aware of your employee activities and have a solid operational awareness of your technology.



Print Solutions

We optimise your entire print environment, from daily office printing to high-volume production. Expect lower costs, automated workflows, and secure, sustainable print management that prioritises efficiency and aligns with your business goals.



Cybersecurity

Our comprehensive range of cybersecurity solutions caters to both individual users and large enterprises alike. Tailored to meet your specific requirements, we offer highly effective managed detection and response services. Leveraging cutting-edge security technologies, our solutions provide real-time threat prevention across diverse environments including networks, clouds, and data centres.



Software

Our network-ready, cloud-based software is secure and easy to integrate with customisable solutions for intelligent information and workflow management, digital filing, archiving and disaster recovery, and auditable cost management.



Audio and Visual

We provide integrated audio and visual solutions that enhance communication, collaboration, and engagement. From boardrooms to digital signage and video conferencing, our technology delivers clear sound, sharp visuals, and seamless connectivity to support your business needs.



Finance

Our in-house finance solutions offer customers flexible, affordable and accessible finance, managed by professional consultants who help to structure any deal simply, efficiently and cost effectively.

WHY CHOOSE ITEC TIYENDE?

Cutting through the noise: Doing business smarter, cheaper and more efficiently.

If technology isn't your business, why waste time on technology? Studies show that you can spend up to 80% of your time and money keeping your technology going. By paying for services rather than infrastructure, you save money and free up your IT resources so you can grow your business.

Itec Tiyende's integrated services-based approach gives you access to us as a single vendor. We provide a single SLA with proactive technical service, a National Resolution Centre to log all calls and one invoice at the end of the month. A dedicated team of experts to keep your whole business secure by reviewing your solution as technology progresses.

- ✓ Certified Level 1 B-BBEE
- ✚ 47 offices across Southern Africa In partnership with 7 entities across Southern Africa
- 🏆 Partnerships with SA's leading Tier 2 Network Providers
- 🔄 Importer and distributor of leading technology brands
- 🌐 First to offer a Certified Carbon-Offset Programme
- 🎓 National Resolution Centre



Trustworthy

We are honest, transparent, and collaborative with our customers.



Professional

We are service-minded, and display integrity with our respectful and helpful approach.



Passionate

We love what we do and have fun doing it.



Innovative

We are operational experts who apply what we know.

We work smart. We make things simple. We solve problems.

“ The support that Itec SA has offered throughout the project has been unrivalled by any other supplier that we have previously worked with. They made the transition seamless and have greatly improved communication, efficiencies and productivity within the Group. ”

*Gregg Trollip
Project Manager at CAVI Brands*

“ Not only did Itec provide us with an amazing solution that has totally transformed our operations, they continue to go above and beyond when it comes to ongoing support and service. ”

*Natasha Leonard
BZM Transport's office administrator*

“ I would more than recommend Itec for the amount of support and service they provided across the whole transition period. It's not always been easy for the team to put up with the staggered implementation and system management. Itec have really delivered 100 percent for us. ”

*Devendran Naicker
Uniplate MD*

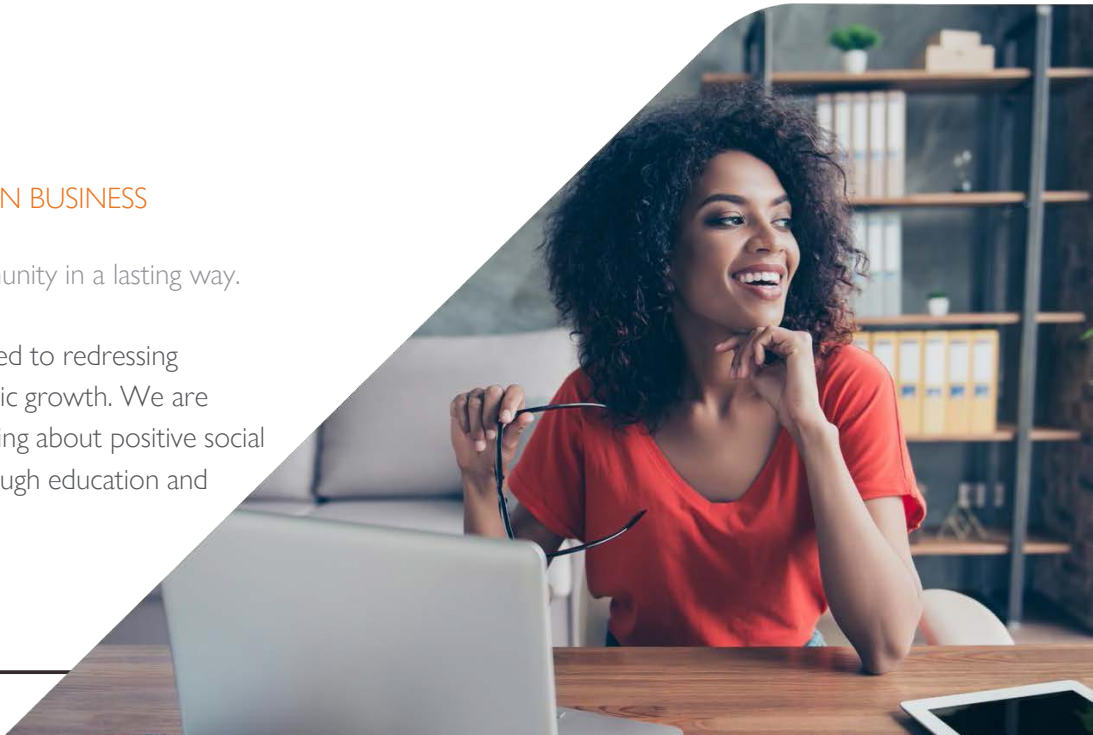


LEVEL 1 B-BBEE

TRANSFORMING MORE THAN BUSINESS

Making an impact on our community in a lasting way.

As a company, we are committed to redressing inequality and boosting economic growth. We are making a concerted effort to bring about positive social change and transformation through education and skills.



We up-skill people through our learnerships and work readiness programmes.



Staff development is achieved via our bursary initiative. We currently have 16 bursaries awarded within Itec SA.



We assist our franchisees, affiliates and suppliers, which are 51% black-owned, with enterprise loans/grant funding.



We also work with a black-owned EME to ensure procurement alignment & B-BBEE compliance of suppliers.

Strategies for Sustainability

To us, sustainability is more than just an aspect of corporate social responsibility - it's good business practice. Sustainability drives innovation, inspires employees and shareholders, and helps companies operate more efficiently.

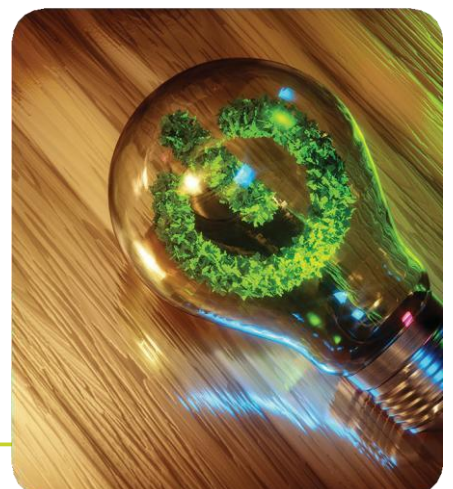
Our environmental strategy not only focuses on reducing the impact of the equipment we supply to clients, but also supplying an energy solution that mitigates it. We partner with suppliers who share our sustainability commitment. For example, we partnered

with impactChoice to become the first solutions company in South Africa to offer our clients an audited and recognised carbon-offset programme. Through impactChoice, we are able to offer valid certificates that effectively neutralise the impact of their printing and copying activities automatically.

DOING BUSINESS SMARTER

Our proactive approach to sustainability, as well as our energy service offering, drives innovation and inspires employees and shareholders, which in turn helps companies to operate more cost-effectively and efficiently.

In our own business, we keep minimising our environmental impact by recycling office waste, disposing of obsolete equipment in an environmentally sound manner and implementing a smart plastic policy to reduce the use of single-use plastic bottles.



THE IOT WORKPLACE



Intelligent Networking



Cybersecurity



Office Automation



Security



Unified Communications



Software Applications



Cloud Solutions



Audio and Visual

Itec Tiyende will complete a comprehensive needs analysis in order to address technology challenges in your business process. Itec can then manage the operational implementation of the solution to solve these challenges. The so-called “Intelligent Workplace” is all about using technology to create organisational efficiency.

To do this, businesses and their service providers consider aspects like convenience, accessibility, personal safety, and secure remote working. Innovation and ROI can now work hand-in-hand, because your investment is in services and not infrastructure such as servers, networks, storage and other assets. With Itec as your single solutions partner we ensure that you access the latest technology to help your business stay ahead of the transformation curve.

OUR TECHNOLOGY PARTNERS

Managed Print Services



Hikvision is a world leading IOT solution provider with video as its core competency. Their research and development division advances audio and video encoding, video image processing, and related data storage, cloud computing, big data, and deep learning.



Dahua Technology is a leading video surveillance product and solution provider in IP camera, NVR, HD CCTV camera, Analog, PTZ and other vertical solutions.



EZVIZ is a proud leader in smart security technology and is constantly innovating to build a wider range of connected devices. Advanced AI, cloud computing and deep learning simplify and automate your home experience.



Hanwha Vision provides world-class total security solutions tailored to the needs of our customers, offering high-resolution equipment and intelligent technology that proactively prevents crime and effectively responds to the emergence of new technologies.



ZKTeco is a globally renowned enterprise with biometric verifications, offering hybrid-biometric identity card verification and O2O, enterprise big data solutions, visitor management, car entrance management, and freight management with enterprise hybrid biometric security platform.



A powerful standalone, our time and attendance solution can be upgraded and integrated with additional software and hardware to save time, lower costs, and streamline processes.



Boomgate Systems manufactures vehicle and pedestrian access control equipment, high security and anti-terror security products.



Turnstar manufactures high-quality entrance control solutions, including turnstiles, speedgates, revolving doors, vehicle barriers, and high-security bollards. Turnstar delivers durable, reliable, and seamlessly integrated performance for access control and time & attendance applications across industries.



Lytehouse is changing the face of threat detection with powerful computer vision and machine learning technology that is fast, accurate and live in 5 minutes. Modular platform and proprietary video analytics are fully customisable and deployable in any environment to ensure your sites are effortlessly protected.



timeTec Security & Property Management visitor management system automates and streamlines visitor access and customer engagement on your property.



A smart, app-driven solution that simplifies and secures visitor access while improving oversight and accountability on your property. Charlie enhances the visitor experience with real-time approvals, automated check-ins, and integration with existing security infrastructure.



Enterprise-grade, unified security software as a service that connects your systems, sensors, and data, Genetec is a platform that unifies core physical security products with the capability to add the functionality or data you need from other products.

Cybersecurity



Check Point provides intelligent cybersecurity solutions that prevent sophisticated threats and safeguard critical data across today's digital environments.



Fortinet brings together the concepts of convergence and consolidation, to provide comprehensive cybersecurity protection for all users, devices, and applications and across all network edges.



Sophos delivers a best-of-breed security system that simplifies and strengthens IT security. By consolidating your protection under a single, synchronised solution, Sophos helps keep your data safe and provides a better return on investment by saving time and money.

Office Automation



We offer our clients the full range of laser printers, multifunction devices and associated consumables, services and solutions from Lexmark.



Itec imports, installs and supports the award winning bizhub range of high performance Multifunction Printers, as well as the AccurioPrint & AccurioPress Production range from Konica Minolta.



Itec Secure and Itec Secure Plus combat cyber attacks and malware via printers with robust and intelligent MFPs and software that add additional layers of security to prevent the spread of viruses and malware.

Cloud



Silicon Sky co-locates in multiple leading carrier-neutral data centres, for an enterprise-grade managed cloud platform. They design, build, and manage on-premise and hosted infrastructure solutions for Itec customers across SA.

Software



I-SUITE is an integrated software solution that combines document management, intelligent workflow automation, and advanced business process optimisation, streamlines the way you capture, store, manage, and action information.



Print Director is a powerful print management solution that can help you secure your print fleet, reduce and allocate printing costs to departments, improve productivity, and support multiple print environments



Desilian transforms legacy and complex data into smart, automated, and visual insights—enabling organizations to process large volumes and uncover hidden connections across diverse datasets.



By digitising your documents, you can easily locate documents in a shared platform, extract the necessary data to eliminate keystrokes, and streamline your business processes with automated workflows.



ITEC TIYENDE

COMMUNICATION TECHNOLOGY PARTNERS

Itec Tiyende is a licensed Tier 3 Service Provider offering customised unified business communication solutions.

Responding to real-world business challenges, we offer consultation to implementation, ongoing maintenance and support, providing our customers with end-to-end connectivity, voice, firewall, hosting, data and cloud solutions. A single point of contact gives our clients peace of mind and the freedom to focus on their core business.

Communications



Itec provides a range of #1 Gartner rated solutions incorporating Mitel technology including business telephones with mobility and unified communications for remote working, extending to customer experience management with rich analytics, reporting, messaging, and compliance contact centre integration.



Voicegate is a managed IP telephony system with cloud-hosted and on-prem models. It enables PBX functions and features associated with traditional PBX. Supported by various connectivity types, this cost effective, scalable solution provides competitive call rates that deliver both inbound and outbound voice traffic with Yealink and Fanvil handsets.



Seacom owns an extensive ICT data infrastructure – including multiple subsea cables, a resilient, continent-wide IP-MPLS network, and Metro Fibre in major African cities. SEACOM provides fibre internet services to businesses with dedicated, high-speed and low latency FTTB.



DFA is a premier wholesale, open-access fibre-infrastructure and -connectivity provider in South Africa. Together we build, install, manage, and maintain a world-class fibre network to transmit metro and long-haul telecommunications traffic.



Frogfoot Networks was established over 19 years ago and has fast become an industry leader in the telecoms industry. As a licensed open-access Fibre network provider, Frogfoot provides Fibre to the business infrastructure across South Africa.



Comsol is a leading provider of dedicated, high-speed, reliable last mile connectivity and access solutions (Enterprise & Premium Broadband Layer 2 / Layer 3) as well as private networks. Itec and Comsol are committed to enable limitless connectivity for South Africa and beyond.



iLink services offer a reliable, high speed connectivity platform for the convergence and management of the simplest to the most complex data, voice, and IP-based services. Our solutions are future-proof, range from 10Mbps to 10Gbps and can be customised to your unique requirements.

Itec Tiyende is a licensed Tier 3 Communications Service Provider



Audio and Visual

Hisense

The Hisense interactive digital displays include the latest smart features to improve collaboration and create a leading engaging experience for users. Touch enabled, they allow multiple people to use them at once to present, illustrate and share information.



Mindstec delivers the latest, most reliable AV innovations through trusted global partners—carefully selected for performance, efficiency, and enhancing modern AV environments.

Yealink

Yealink video conference systems enhance collaboration experiences, whether you're working from home, workspace or any remote location. These include conference cameras, all-in-one video bars, interactive displays, accessories, and management platform.



Alpha-tech specialises in audio, visual and automation products for the African market. Our range of products are specifically chosen to provide a comprehensive turnkey solution, based on high quality brands and enticing warranty offerings.

Tier 1 Partner of ZARDOX a premium distributor of Mindstec

INDUSTRY EXPERTISE

Itec Tiyende has extensive experience across all major industries.

Our solutions uniquely developed to address the needs of that market. Below are just some of the vertical markets where we have deployed our solutions.

Customised Solutions for Your Sector



Legal

The Legal industry has specific needs around compliance, privacy and efficiency within their own firms as representative of juridical persons, but also by extension of their clients whom they represent.



Financial

Financial institutions require stringent security and regulatory compliance across all business processes, while managing costs, streamlining workflows and maintaining optimal productivity.



Education

The Itec range of products and services are particularly well suited to maximise efficiencies, safety and communication – three aspects that any teachers and parents will agree are of high value and importance in the Education sector.



Agriculture, Mining & Construction

Itec provides outlying locations with high-speed internet connectivity that enables them to connect with their head office or cloud-based system. With mining in particular, we provide sophisticated surveillance tools for some of the most hostile environments in the world.



Property

Businesses in the Property market must be able to respond instantly to a customer's requirements, regardless of the customer or agent's geographical location. Team members must communicate seamlessly from wherever they are. Communication solutions must be efficient and cost-effective.



Retail

With the contemporary consumer busier than ever before, the Retail sector must keep up. This increasingly educated, mobile and self-sufficient consumer demands access to systems that allow agile self-service. If they don't find what they are looking for, these consumers also have instant access to a wealth of alternatives.



Hospitality

The Hospitality industry needs to reinforce their competitive advantage by re-evaluating changing customer expectations as a result of digital transformation impacting all touch points from physical security to facilitation of leisure bookings.



Transport and Logistics

The Transportation and Logistics industry is confronted by vast change that brings both risk and opportunity, including the ability to adapt to changing customer expectations, mitigating the threat of new market entrants and increasing operational efficiencies.



Healthcare

The Healthcare sector faces the challenges of increased regulatory compliance requirements, an ageing population, and significant budget cuts. Patient security, information privacy and quality of care must be balanced against operating costs, the flexibility and mobility of healthcare professionals, asset management, and managing multiple systems and locations centrally.

GAUTENG

ITEC TIYENDE

KWA-ZULU NATAL

ITEC KZN

ITEC NEWCASTLE -
ASSOCIATE

ITEC MIDLANDS -
ASSOCIATE

NORTH WEST

ITEC SIMUNYE

EASTERN CAPE

ITEC EAST CAPE

ITEC NELSON MANDELA
BAY

ITEC WILD COAST

MPUMALANGA

ITEC ILANGA

ITEC MPUMALANGA
(WITBANK)

ITEC MPUMALANGA
(NELSPRUIT) -
ASSOCIATE

WESTERN CAPE

ITEC CAPE TOWN

ITEC WELKOM (GEORGE)

ITEC TIYENDE CAPE
VALLEY

ITEC WINELANDS -
ASSOCIATE

LIMPOPO

ITEC INNOVATE POLOKWANE

ITEC TIYENDE POLOKWANE -
ASSOCIATE

NORTHERN CAPE

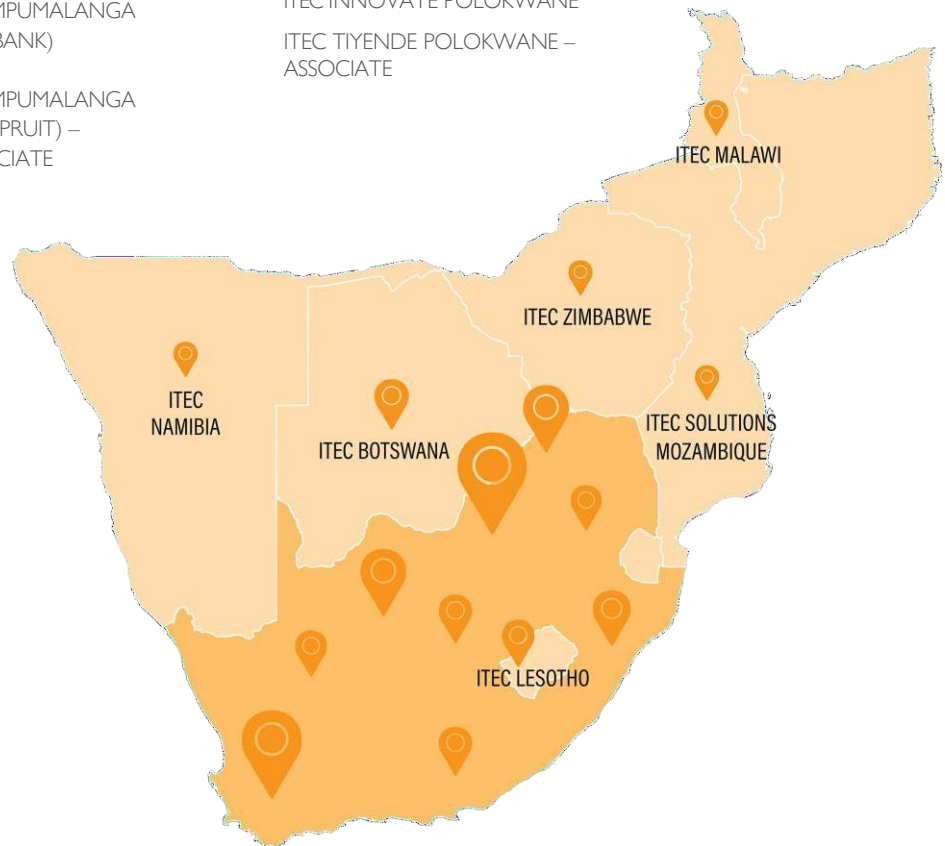
ITEC NORTHERN CAPE -
ASSOCIATE

ITEC UPINGTON

FREE STATE

ITEC FREE STATE -
ASSOCIATE

ITEC BETHLEHEM



MANAGED BUSINESS SERVICES



011 236 2135

info.tiyende@itecgroup.co.za

itectiyende.co.za