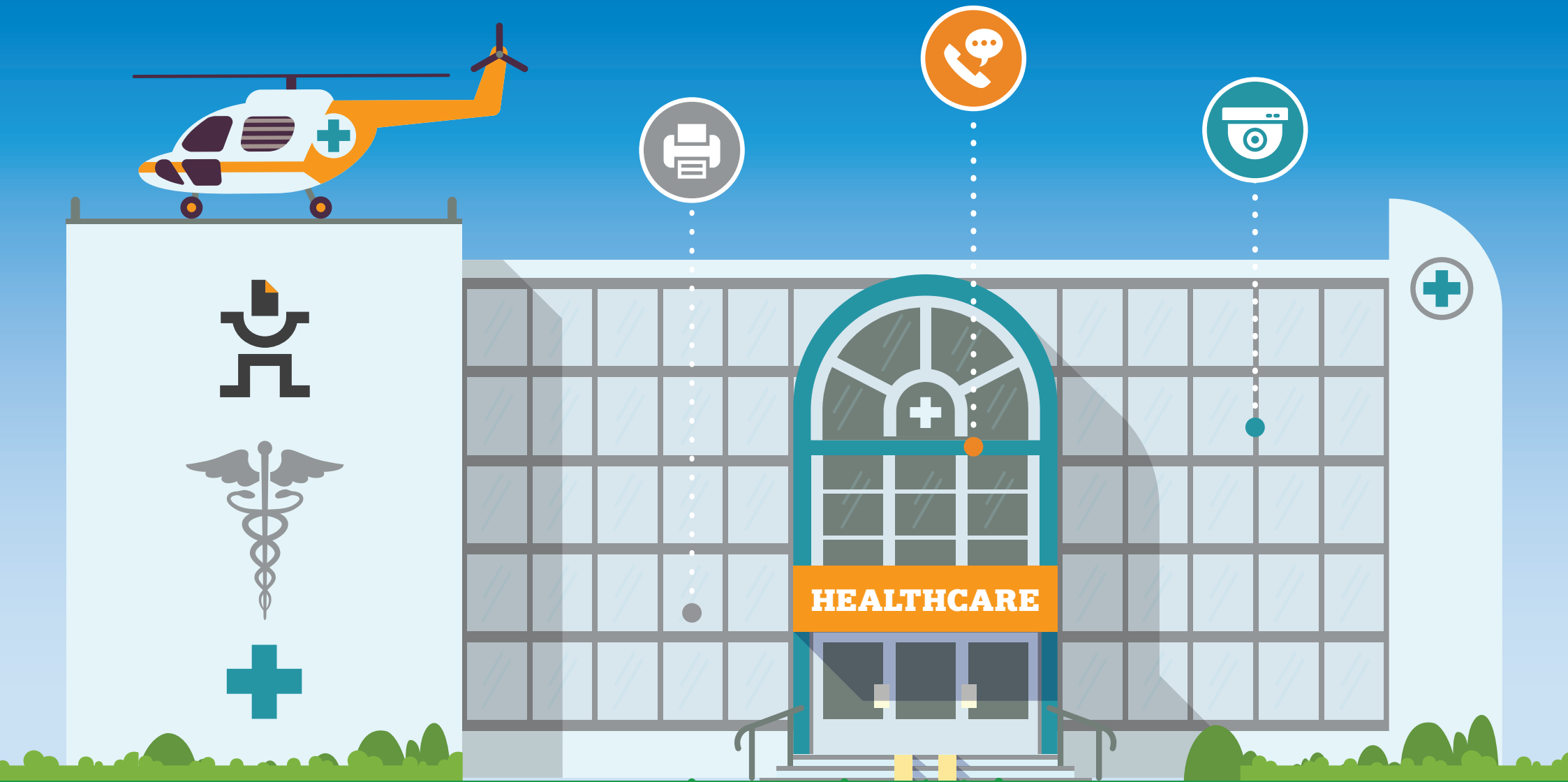


IOT HEALTHCARE



● Document Management

● Unified Communications

● Security & Business Intelligence

IOT HEALTHCARE

At Itec, we deliver customised managed business services for the healthcare industry, including Unified Communications, Document Management, Security and Cybersecurity. Watch the IoT Healthcare video here.

Our **three core product focus areas** form the foundation of our expertise and offering, with our other pillars as value-added services.



Our **OFFICE AUTOMATION AND PRINT MANAGEMENT** offering is customisable and access-controlled, with intelligent scanning and archiving capabilities for hard and soft document management. Documents are securely encrypted and compliant with proactive service, comprehensive workflow, and analytics-driven print management.



Our **UNIFIED COMMUNICATIONS** solution provides an integrated Unified Communications platform that is POPI-compliant. DECT and smart devices ensure that healthcare practitioners can communicate about patient care quickly and securely for streamlined information access and collaboration.



Our **SECURITY & BUSINESS INTELLIGENCE** suite offers security and analytics that minimise the risk of theft and keep medical facilities secure. Radar Sensor Detection in wards and operating rooms monitor movement while maintaining confidentiality. AI-enhanced CCTV and access control, controlling entry to restricted areas, and parking management to keep medical facilities safe.

- 1 Entrance & Parking
- 2 Admissions & Reception
- 3 Operating Room
- 4 Emergency Room & X-Rays
- 5 Ward & ICU
- 6 Doctor's Rooms & Canteen
- 7 Admin & Security Office



NEXT

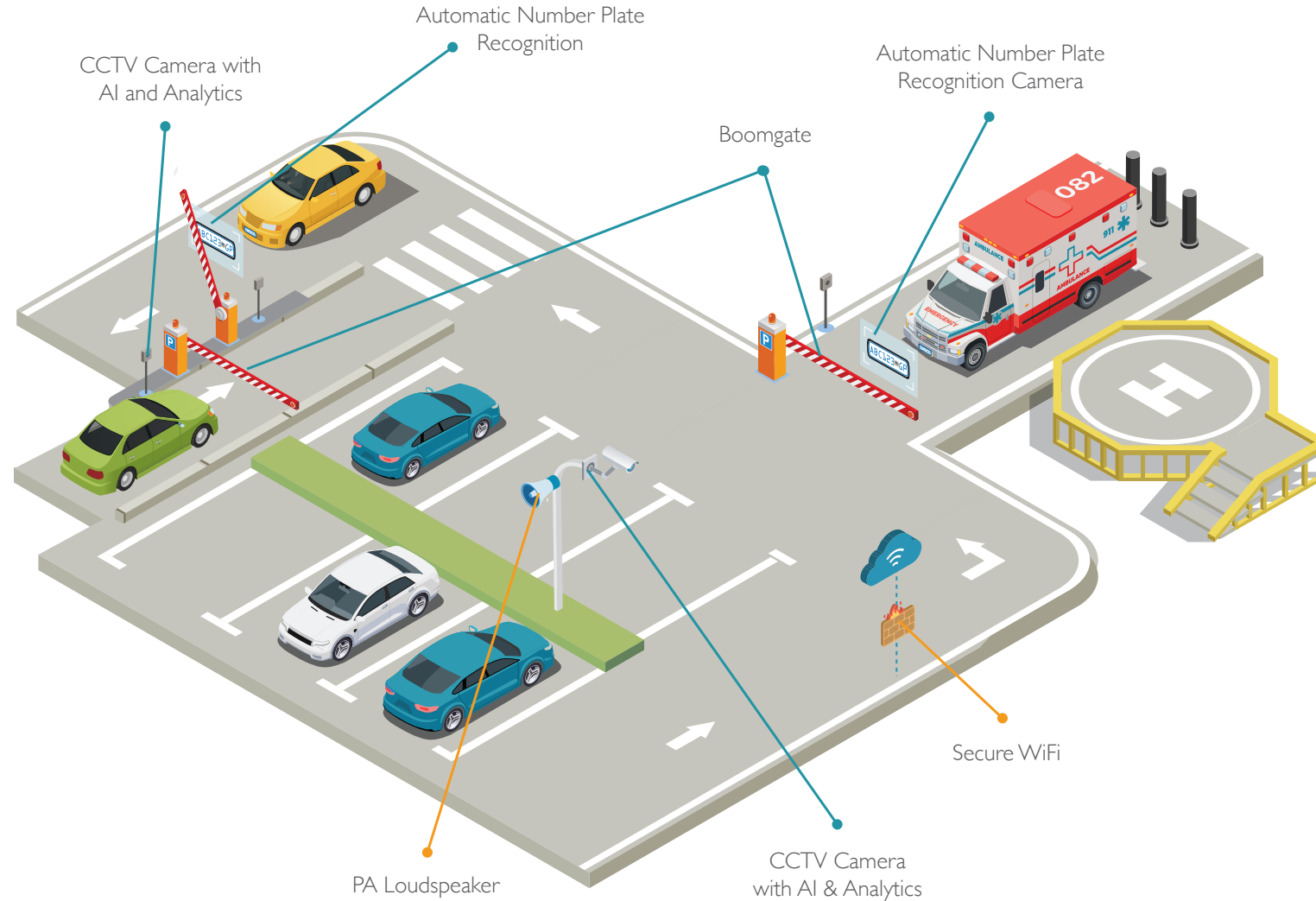
ENTRANCE & PARKING

Controlled & Secure Medical Facility Entrances and Parking



Medical facilities must provide secure yet accessible entrances and parking areas for patients, visitors, and staff. Balancing patient safety and efficient traffic flow, an intelligent security solution addresses these issues with systems customised to the facility's size and purpose, integrating seamlessly to provide comprehensive protection and a welcoming environment.

Itec implements no-touch access controls at facility entrances, ensuring safety and convenience. Enhanced access control protection is achieved through automatic number plate recognition cameras that allow for white and blacklisting of vehicles, plus boomgates for controlled access. Secure WiFi networks protect patient data and uphold facility integrity. Our sophisticated CCTV cameras, equipped with AI and analytics, provide vigilant monitoring, while PA loudspeakers ensure clear communication. These comprehensive security measures create a secure and efficient hospital environment.



- Document Management
- Unified Communications
- Security & Business Intelligence

ADMISSIONS & RECEPTION

Efficient, Integrated Omni-Channel Admissions & Reception

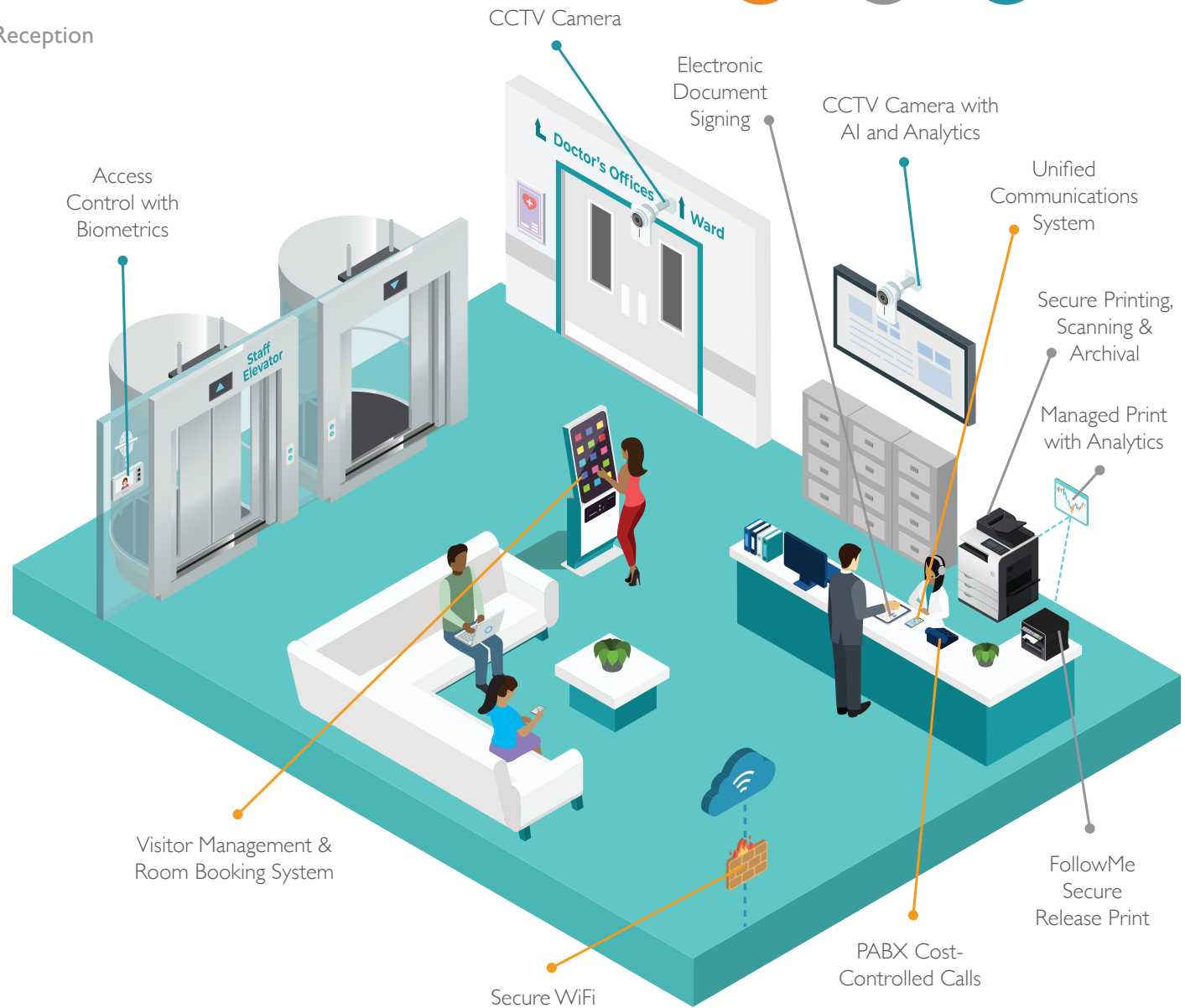
To maintain an efficient admissions and reception area, medical facilities must overcome challenges with fragmented document handling and communication systems, and manage complex security requirements. For seamless patient interactions that comply with data security and healthcare standards, hospitals and doctor's rooms require an integrated solution that enhances document workflow, unifies communications, and provides robust security with business intelligence.

Itec's Document Management solutions ensure the safe handling of patient records with real-time patient updates through digitisation and integrated workflows, Managed Print Services (MPS), FollowMe secure release print, scanning, and archival capabilities.

Our omni-channel Unified Communications, including contact centres, provides seamless HIPPA-compliant patient interactions, efficient appointment and booking management, CRM and ERP integration, and mobile DECT-enabled devices.

Our security solutions are designed with business intelligence in mind. No-touch access control, biometrics, and CCTV with intelligent analytics keep medical facilities secure while cybersecurity safeguards data and maintains operational integrity.

- Document Management
- Unified Communications
- Security & Business Intelligence



OPERATING ROOM

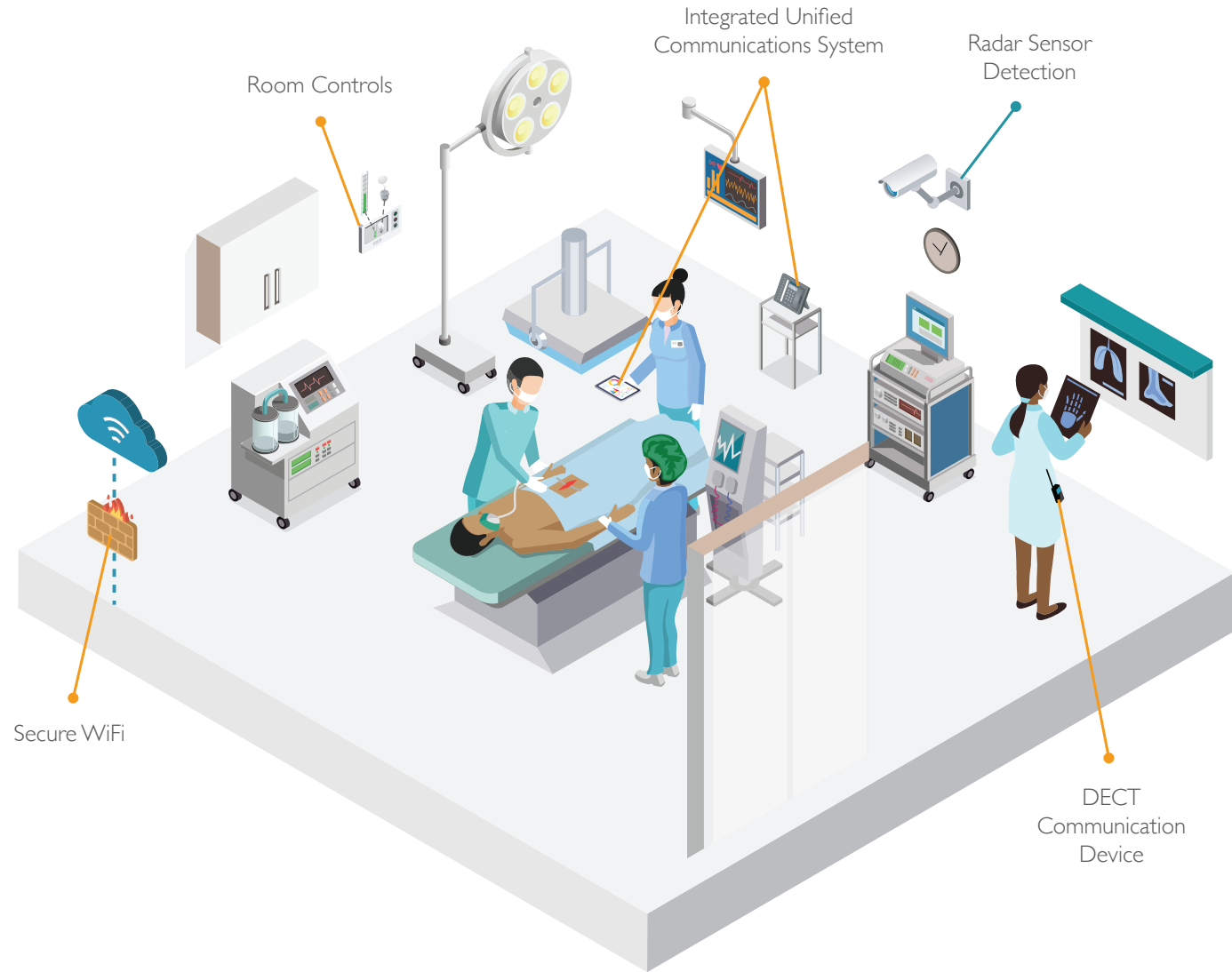
Operating Room Efficiency with Integrated Communications & Discreet Surveillance



Operating rooms require a well-integrated communications system to ensure the highest quality patient care that doesn't compromise patient confidentiality or data integrity. For enhanced operational efficiency and compliance, the OR needs the right communication tools, security and cybersecurity measures that protect patient identity while maintaining a secure environment.

Itec's HIPPA and POPI-compliant Unified Communications systems ensure efficient collaboration and emergency response in operating rooms. DECT-enabled devices and integrated channels (WhatsApp, email, phone, web chat) support secure communication, while tablet apps integrated with Active Directory ensure encrypted data exchange for seamless and secure collaboration.

Our cybersecurity solutions include site-specific cybersecurity measures with firewalls and network security. Radar-enabled precise movement detection protects confidentiality. Encryption and forensic tracking safeguard patient records and sensitive information.



- Document Management
- Unified Communications
- Security & Business Intelligence

EMERGENCY ROOM & X-RAYS

Enhanced Emergency Room Efficiency & Rapid Response



Emergency rooms require seamless communication, robust security, and efficient print management for effective patient interactions, rapid emergency response, and secure data. The ER needs mobile communication, business intelligence, and integrated print solutions that streamline operations, protect patient information, and optimise movement flow within the ER of overutilised or underutilised spaces.

Itec enables seamless communication in emergency rooms with DECT-enabled devices and apps. Our omni-channel contact centre supports real-time patient interactions and customisable workflows. Secure WiFi-enabled digital displays improve information sharing, while medical aid integration streamlines pre-authorisation and billing.

We provide robust security with AI-enhanced CCTV, enhanced protection, and compliance with data regulations to ensure the secure handling of patient records. Radar cameras protect confidentiality while tracking movement.

Our print solutions include secure FollowMe printing, compact A4 devices, and efficient scanning. Integrated with ERP systems, they offer real-time updates and forensic tracking for optimised document management.



- Document Management
- Unified Communications
- Security & Business Intelligence

WARD & ICU

Omni-channel Communications, Managed Print & Secure Data

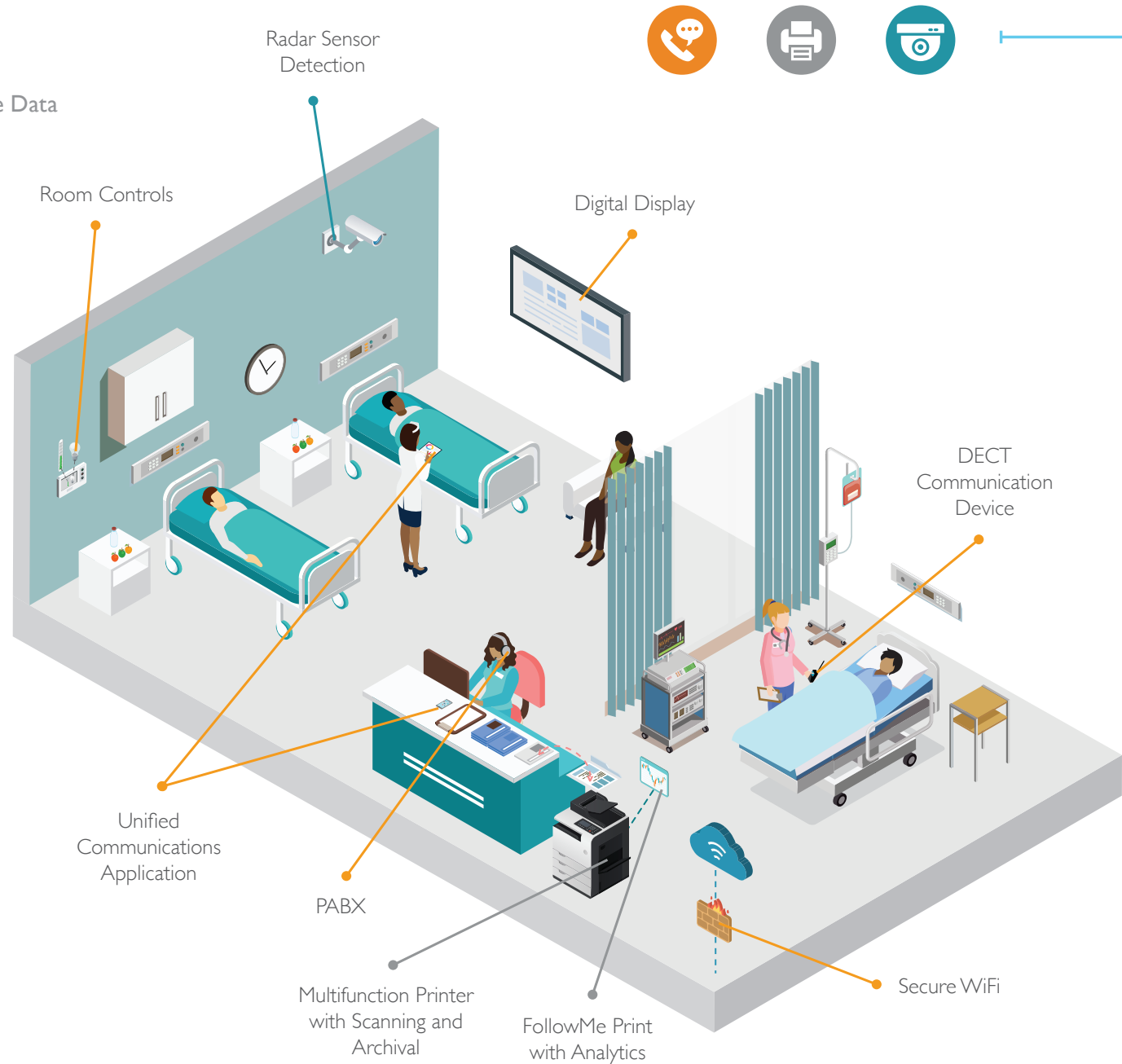
Wards and ICUs require efficient document management, omni-channel communication, and secure facilities. To provide the best patient care, including critical response times for emergencies, and ensure data integrity, wards and ICUs require secure print management, integrated communication, and robust security measures for seamless, efficient, and safe hospital operations.

Itec offers secure FollowMe printing, efficient scanning, and real-time document updates. We streamline capture, routing, and archiving processes, integrating with ERP systems and providing barcode scanning for inventory. Forensic tracking ensures secure digital record storage. Our solutions are POPL-compliant, with secure handling of patient records.

DECT-enabled devices, tablet apps, and an omni-channel contact center enable streamlined, mobile unified communications. Secure WiFi enabled digital displays, and room controls in wards support seamless patient access and efficient operations.

Patient safety is ensured with AI-enhanced CCTV and Radar Sensor Detection for movement detection which maintains privacy.

- Document Management
- Unified Communications
- Security & Business Intelligence



DOCTOR'S ROOMS & CANTEEN

Streamlined, Integrated, Omni-channel Operations for Doctor's Admin



Doctor's rooms require efficient document management, integrated communications, and intelligent security for optimal operational efficiency, patient care, and data integrity. Secure print management, integrated communications, and security solutions that rely on business intelligence ensure seamless and protected operations in facilities used by medical practitioners.

Itec offers secure FollowMe printing and efficient scanning for doctor's rooms. Our solutions support document capture, routing, and real-time updates while integrating with ERP systems. Forensic tracking ensures secure storage and handling of digital records.

DECT-enabled devices, tablet apps, and omni-channel contact centres provide real-time patient and staff interactions and seamless pre-authorisation with medical aids. Secure WiFi-enabled digital displays in waiting rooms share information and entertain patients.

Our robust security measures include access controls and AI-enhanced CCTV for public areas and Radar Sensor Detection for treatment areas. Integration with existing security infrastructure protects the facility.



- Document Management
- Unified Communications
- Security & Business Intelligence

ADMIN & SECURITY OFFICE

Enhanced Operational Efficiency and Business Intelligence



Efficient admin and security offices utilise streamlined document management, integrated communications, and business intelligence from security analytics tools. Effective operations and data integrity are ensured by secure print management, integrated communication systems, and comprehensive security solutions that streamline and protect operations.

Itec offers advanced document capture and scanning solutions that integrate with ERP systems for real-time updates. Forensic tracking and secure storage of digital records ensure data integrity. Centralised remote management and analytics streamline operations with comprehensive reporting.

Our integrated omni-channel Unified Communications and contact centres utilise centralised management and intelligent reporting tools to optimise workflows and manage customer experience effectively.

We provide robust security with biometric access control and AI-enhanced CCTV. Our systems are accessible remotely and provide business intelligence from analytics.



- Document Management
- Unified Communications
- Security & Business Intelligence

Visit the **IoT Healthcare**
page on our website for
more information.

[CLICK HERE](#)



MANAGED BUSINESS SERVICES

